

This manual is for reference and historical purposes, all rights reserved.

This creation is copyright© by M. Butkus, NJ, U.S.A.

These creations may not be sold or distributed without the expressed permission of the producer

I have no connection with any camera company

On-line camera manual library

If you find this manual useful, how about a donation of \$2 to:

M. Butkus, 29 Lake Ave., High Bridge, NJ 08829-1701

and send your e-mail address so I can thank you.

Most other places would charge you \$7.50 for a electronic copy or

\$18.00 for a hard to read Xerox copy.

This will allow me to continue this site, buy new manuals and pay their shipping costs.

It'll make you feel better, won't it?

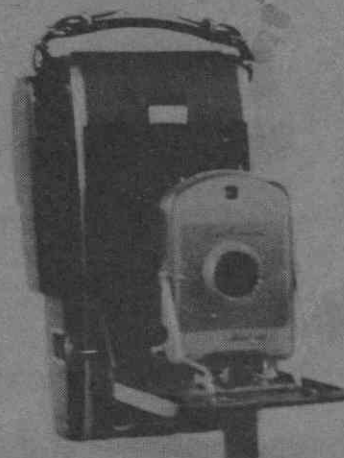
If you use Pay Pal, go to my web site

www.orphancameras.com and choose the secure PayPal donation icon.

1700

\$3.00

Polaroid* Cameras Current Pricing Guide



1948-1970

*Polaroid is a registered trademark of Polaroid Corp.,
Cambridge, Mass.

© Ladd Publications, Inc. 1979

Polaroid* Cameras Current Pricing Guide

1948-1970

Copyright
© Ladd Publications, Inc., 1979
P.O. Box 137
Jacksonville, Ill. 62651

Introduction:

Welcome to the Polaroid Camera Current Pricing Guide.

At the moment, many of the roll film Polaroids can be had for \$10 to \$15. As more and more people begin collecting these gems, we can expect that prices will increase in the future.

While the main emphasis in this guide will be on the roll film models, we have also included complete listings of the pack film and non-folding Polaroids through to 1970.

We have also included some tips on where to look for older Polaroids; a general viewpoint on condition of these older models; and other useful hints to collectors.

Happy hunting!

First Edition — September, 1979

Collector's Guide:

Where to find Polaroids:

First, check out your local camera stores. Even if none are displayed, the shop may still have some stored away or in the repair department.

You might also let the owner know you are interested in the roll film models. This might prompt him to accept some in trade where normally he might turn them away.

Thrift stores, consignment shops, Goodwill Industries and the Salvation Army are also likely places the cameras might turn up.

When checking out garage and yard sales ask the owner if he has one for sale. You might be pleasantly surprised.

Local auctions might have some for sale, but beware of paying too much.

Finally, local pawnshops might have some, even if not on display.

A word about condition:

Many Polaroid roll film cameras are found in excellent condition. However, the plastic housing covering the viewfinder may have some scratches or gouges. Since these housings seemed to have been a weak spot, collectors will have to accept imperfect housings with resignation. Naturally, an almost perfect housing might upgrade a camera to near mint condition.

Check the vinyl coverings carefully; they may sometimes have some gouges or scratches.

The model J33's and model 80 series have metal bodies which are more often found in poorer condition. Be patient. Hold off till an excellent model turns up.

The model 95 series are covered in a brown vinyl that has some black shading in it, sometimes causing the model not to look as good as it should.

A thinner bellows material was used on the 850 and 900 models, sometimes causing the bellows to misfold when the camera is closed. Also, many model 900 cameras are found in rather poor condition — apparently from heavy usage.

Spend a few minutes putting your latest find in top top shape. Chrome can be polished; metal bodied models washed in a mild dishwashing detergent; and the vinyl coverings cleaned with a product such as The Tannery, available at most drug or grocery stores.

Dust the bellows gently with a soft, damp cloth.

Carefully re-glue any vinyl covering that has pulled away from the metal housing.

Sometimes parts can be switched from one camera to another to come up with the best looking model.

Are variations collectible?

Very definitely. The color dot varieties on the J33 & J66 models actually identify cameras with different shutter speeds. Also, the flash distance range on the yellow dot cameras is seven feet; on the blue and green dot cameras it is ten feet.

The regular cutter bar and latching cutter bar variations identify cameras modified by the factory to use 3000 speed film. When the new film became available, certain models were internally lightsealed to handle the film. The early lightsealed models, with serial numbers preceded by the letter "L", were still equipped with the regular cutter bar. It was quickly discovered that this bar was permitting enough light to enter the camera to affect the high speed 3000 film. Within a matter of months, the lightsealed models were equipped with a new latching cutter bar that sealed out the light at this spot on the camera.

The cutter bar problem produced some very scarce variations. In the case of the model 150, less than 50,000 of the lightsealed cameras with the regular cutter bar were produced.

Less than 30,000 lightsealed units with regular cutter bars were made of the model 800.

Fortunately, both varieties of the cutter bars are riveted into the camera body, which would make switching parts very difficult. It would also be necessary to replace the pull down tab with a correct serial number for this variation.

What about accessories?

In this first edition of the pricing guide, we have confined our listing of accessories to flashguns only. If a Polaroid outfit can be purchased for the price of the camera alone, then the accessories can be viewed as a bonus.

Regarding production figures:

Production figures shown in this guide have been compiled from information supplied by Polaroid plus a careful study of serial numbers on the different models. Although the figures are approximate, they are nevertheless quite accurate.

The cameras are getting harder and harder to find. Huge numbers of the roll film models have been "traded in" on newer Polaroids, and these older models in turn have been re-sold in South America.

Determining current prices:

The current prices have been arrived at through a combination of prices in camera stores (where they are priced only as a usable camera); and their scarcity based on production figures.

Once collectors begin to appreciate the desirability of the older Polaroids, prices will begin to find their true level.

For the moment, however, collecting Polaroid cameras can still be just plain fun. They are available at bargain prices and the collector is under no pressure to buy the latest roll film model before the price goes up next month. How sweet it is!

SECTION 1:

ROLL FILM CAMERAS CHECK LIST

Model J33

1961-1963

Original retail price \$ 74.95

Built-in flashgun; no. 330 adapter kit included additional flash unit for use with color film.

Two variations: yellow dot (G or F serial numbers) and blue dot (AF serial numbers)

Beige metal and plastic case.

Model J66

1961-1963

Original retail price: \$ 99.50

Built-in flashgun; no. 660 adapter kit included additional flash unit for use with color film.

Three variations: yellow dot (J serial number); blue dot (AJ serial number); green dot (BJ serial number).

Gray vinyl covered case.

Model 80

1954-1957

Original retail price: \$66.95

Flashgun: no. 281 or no. 250 wink-light.

Gray metal and plastic case.

Model 80A

1957-1959

Original retail price: \$72.75

Flashgun: no. 281 or no. 250 wink-light.

Two variations: Not lightsealed; Lightsealed.

Gray metal and plastic case.

Model 80B 1959-1961
Original retail price: \$ 76.85
Flashgun: no. 281 or no. 250 wink-light.
Gray metal and plastic case.

Model 95 1948-1953
Original retail price: \$ 89.75
Flashgun: no. 200 or no. 252 wink-light.
Brown vinyl covered case.
The first Polaroid camera!

Model 95A 1954-1957
Original retail price: \$ 89.75
Flashgun: no. 201 or no. 252 wink-light.
Brown vinyl covered case.

Model 95B 1957-1961
Original retail price: \$ 94.50
Flashgun: no. 202 or no. 252 wink-light.
Three variations: Not lightsealed; Lightsealed, regular cutter bar; and lightsealed, latching cutter bar.
Brown vinyl covered case.

Model 100 1955-1956
Original retail price: \$ 150.00
Flashgun: no. 201 or 202; or no. 252 wink-light.
Black vinyl covered case.

Model 110 1952-1957
Original retail price: \$ 249.50
Flashgun: no. 221 or no. 222 or no. 251 wink-light.
Black vinyl covered case.

Model 110A 1957-1960
Original retail price: \$ 172.50
Flashgun: no. 281, or no. 250 wink-light.
Two variations: Regular cutter bar; latching cutter bar.
Gray vinyl covered case.

Model 110B 1960-1964
Original retail price: \$ 172.50
Flashgun: no. 281, or no. 250 wink-light.
Gray vinyl covered case.

Model 120 1961-1965
Original retail price: Unknown
Flashgun: no. 281, or no. 250 wink-light.
Made in Japan for overseas distribution.
Gray vinyl covered case.

Model 150 1957-1960
Original retail price: \$ 113.50
Flashgun no. 281, or no. 250 wink-light.
Three variations: Not lightsealed; Lightsealed, regular cutter bar; and lightsealed, latching cutter bar.
Gray vinyl covered case.

Model 160 **1962-1965**

Original retail price: Unknown

Flashgun: no. 281, or no. 250 wink-light.

Made in Japan for overseas distribution.

Gray vinyl covered case.

Model 700 **1955-1957**

Original retail price: \$ 125.00

Flashgun: no. 202, or no. 252 wink-light.

Beige vinyl covered case.

Model 800 **1957-1961**

Original retail price: \$ 119.95

Flashgun: no. 281, or no. 250 wink-light.

Three variations: Not lightsealed; Lightsealed, regular cutter bar; and Lightsealed, latching cutter bar.

Beige vinyl covered case.

Model 850 **1961-1962**

Original retail price: \$ 139.95

Flashgun: no. 250 wink-light.

Beige vinyl covered case.

Model 900 **1960-1962**

Original retail price: \$ 159.95

Flashgun: no. 250 wink-light.

The first electric eye Polaroid.

Gray vinyl covered case.

Swinger Model 20 **1964-1965**

Original retail price: Unknown

Flashgun: Built-in.

Two variations: White locking lever; black locking lever.

First non-folding Polaroid.

White plastic body.

Swinger Sentinel **1964-1965**

Original retail price: Unknown

Flashgun: Built-in.

Gray non-folding plastic body.

SECTION 2:

ROLL FILM CAMERAS PRODUCTION FIGURES:

J33, yellow dot	130,000
J33, blue dot	270,000
J66, yellow dot	700,000
J66, blue dot	500,000
J66, green dot	700,000
Model 80	750,000
Model 80A	520,000
Model 80A, lightsealed	30,000
Model 80B	450,000
Model 95	950,000
Model 95A	650,000
Model 95B	150,000
Model 95B, lightsealed, regular bar	50,000
Model 95B, latching cutter bar	175,000
Model 100	100,000
Model 110	100,000
Model 110A, regular cutter bar	57,000
Model 110A, latching cutter bar	24,000
Model 110B	80,000
Model 120	1,000,000
Model 150	290,000
Model 150, lightsealed, regular bar	40,000
Model 150, latching cutter bar	70,000
Model 160	2,400,000
Model 700	96,000
Model 800	280,000
Model 800, lightsealed, regular bar	30,000
Model 800, latching cutter bar	390,000
Model 850	400,000
Model 900	600,000

Production figures not available on the Swinger Model 20 and Swinger Sentinel.

SECTION 3:

ROLL FILM CAMERAS CURRENT PRICING GUIDE:

	Good	Excel.	Near Mint
J33, yellow dot	20	25	30
J33, blue dot	15	20	25
J66, yellow dot	20	25	30
<u>J66, blue dot</u>	25	30	35
J66, green dot	20	25	30
Model 80	5	10	15
Model 80A	10	15	20
Model 80A, lightsealed	20	25	30
Model 80B	10	15	20
Model 95	45	50	55
Model 95A	20	25	30
Model 95B	25	30	35
Model 95B, lightsealed, regular bar	30	35	40
Model 95B, latching cutter bar	25	30	35
Model 100	40	50	60
Model 110	60	70	80
Model 110A, regular cutter bar	50	60	70
Model 110A, latching cutter bar	60	70	80
Model 110B	45	55	65
Model 120	30	35	40
Model 150	20	25	30
Model 150, lightsealed, regular bar	30	40	50
Model 150, latching cutter bar	25	35	45
Model 160	30	35	40
Model 700	40	50	60
Model 800	25	35	45
Model 800, lightsealed, regular bar	35	45	55
Model 800, latching cutter bar	20	30	40
Model 850	25	35	45
Model 900	20	30	40
Swinger Model 20	1	2	3
Swinger Sentinel	3	4	5

Above prices are for cameras only.

SECTION 4:

ROLL FILM CAMERAS INVENTORY RECORD.

	Condition	Cost
J33, yellow dot	_____	_____
J33, blue dot	_____	_____
J66, yellow dot	_____	_____
J66, blue dot	<u>EXCEL</u>	<u>3</u>
J66, green dot	_____	_____
Model 80	<u>EXCEL</u>	<u>3</u>
Model 80A	<u>MINT</u>	<u>5</u>
Model 80A, lightsealed	_____	_____
Model 80B	_____	_____
Model 95	<u>GOOD</u>	<u>1</u>
Model 95A	_____	_____
Model 95B	GOOD	1
Model 95B, lightsealed, regular bar	_____	_____
Model 95B, latching cutter bar	<u>N MINT</u>	<u>500</u>
Model 100	_____	_____
Model 110	_____	_____
Model 110A, regular cutter bar	_____	_____
Model 110A, latching cutter bar	_____	_____
Model 100B	_____	_____
Model 120	_____	_____
Model 150	_____	_____
Model 150, lightsealed, regular bar	_____	_____
Model 150, latching cutter bar	_____	_____
Model 160	_____	_____
Model 700	_____	_____
Model 800	_____	_____
Model 800, lightsealed, regular bar	_____	_____
Model 800, latching cutter bar	_____	_____
Model 850	<u>MINT</u>	<u>8</u>
Model 900	<u>MINT</u>	<u>8</u>
Swinger Model 20, white lever	_____	_____
Swinger Model 20, black lever	_____	_____
Swinger Sentinel	_____	_____

SECTION 5:

PACK FILM CAMERAS CHECKLIST.

M-60
 CD-70
 M-80
 CD-90
 100
 101
 102
 103
 104
 125
 135
 180
 195
 195 SE
 210
 215
 220
 222
 225
 230
 240
 250
 315
 320
 330
 335
 340
 350
 360
 420
 430
 440
 450

With the exception of the M-60 to CD-90's, and the 180 and 195 models, most of the above cameras can be purchased in used condition for \$20 to \$40. It should be noted that the no. 100, no. 250, no. 350 and no. 450 models have metal cases.

SECTION 6:**NON-FOLDING PACK FILM CAMERAS CHECKLIST**

✕ Big Shot

Big Swinger

Clincher

Clincher 2

Colorpack

Colorpack II

Colorpack III

Colorpack IV

Colorpack V

Electric Zip, Red Body

Electric Zip, White Body

Electric Zip, Blue Body

Minutemaker

Minutemaker BC*

Minutemaker SE

Minutemaker Plus

Minutemaker Plus SE

Square Shooter

Square Shooter 2

Square Shooter 4

✕ Super Colorpack

Super Colorpack IV

Super Shooter

Super Shooter Plus

Super Shooter SE

Zip

*The Minutemaker BC has a black binyl body with a black nameplate.

Above cameras are generally found at garage sales and thrift shops for \$1 to \$10, depending upon the model. Almost all of the models have been discontinued.

SECTION 7:**NON-FOLDING CAMERAS CURRENT PRICING GUIDE:**

	Good	Excel.	Near Mint
Big Shot	10	15	20
Big Swinger	15	20	25
Clincher	20	25	30
Clincher 2	15	20	25
Colorpack	20	30	40
Colorpack II	5	10	15
Colorpack III	10	15	20
Colorpack IV	10	15	20
Colorpack V	10	15	20
Electric Zip, Red Body	15	20	25
Electric Zip, White Body	15	20	25
Electric Zip, Blue Body	15	20	25
Minutemaker	15	20	25
Minutemaker BC	20	25	30
Minutemaker SE	30	35	40
Minutemaker Plus	20	25	30
Minutemaker Plus SE	30	35	40
Square Shooter	25	30	35
Square Shooter 2	15	20	25
Square Shooter 4	15	20	25
Super Colorpack	35	40	45
Super Colorpack IV	20	25	30
Super Shooter	20	25	30
Super Shooter Plus	25	30	35
Super Shooter SE	30	35	40
Zip	12	14	16

Above prices are for cameras only